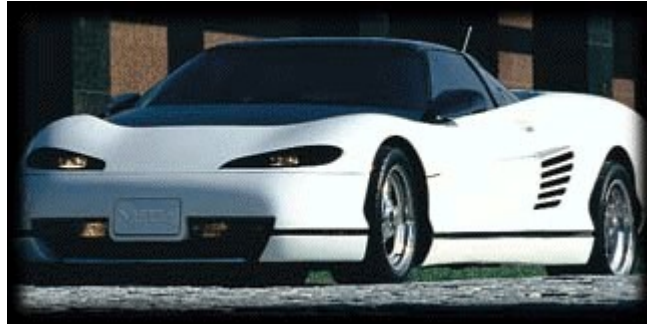


Gisser Concepts

After years of determination and research and Gisser Automotive exotic sports coupe a few discerning



Automotive

extraordinary commitment in development, Concepts' super is now available to enthusiasts. The

limited production Gisser **MEC4** mid-engine, prestige sports coupe recently made its world debut at the North American International Automobile Shows in Detroit and New York. Designers, engineers and the automotive press were unanimously astounded at the aesthetic originality of its form and the abundance of advanced technology lurking beneath its muscular skin.

The **MEC4** is a hybrid of the GM L-98 platform, including its center chassis section and specifically engineered mechanical components manufactured in the USA and Europe.

Phenomenal styling, dynamic performance, assured safety and functional practicality were all highly emphasized in the design engineering of the Gisser **MEC4**.

Ultimately, they have achieved their mission: to create a "supercar" of dynamic styling which sacrifices none of the amenities, reliability and practicality one would expect from a world class performance car.

Execution of the MEC4's pure freedom of expression was accomplished through an unrestrained approach during the progression of design concept to production. Few if any cars built today remain true to their original vision. The **MEC4** began as an original design in which production issues were considered as a forethought. They were addressed during the initial concept phase with the highest levels of creativity and innovation. From concept rendering in the design studio to scale model, extremely close attention was paid to every detail. Once the final concept phase was completed it was translated through CAD (Computer Aided Design) to the full size clay mockup, running prototype and then production model. The utilization of CAD was responsible for the production model's complete faithfulness to the original styling vision and its flawless execution.

The **MEC4** is truly in a niche of its own... the first supercar that can be driven everyday.

Gisser Automotive Concepts
P.O. Box 240
White Lake, New York 12786

Phone: 914.583.5383
Fax: 914.583.5373

WEB: <http://www.gisser.com/>
EMAIL: info@gisser.com